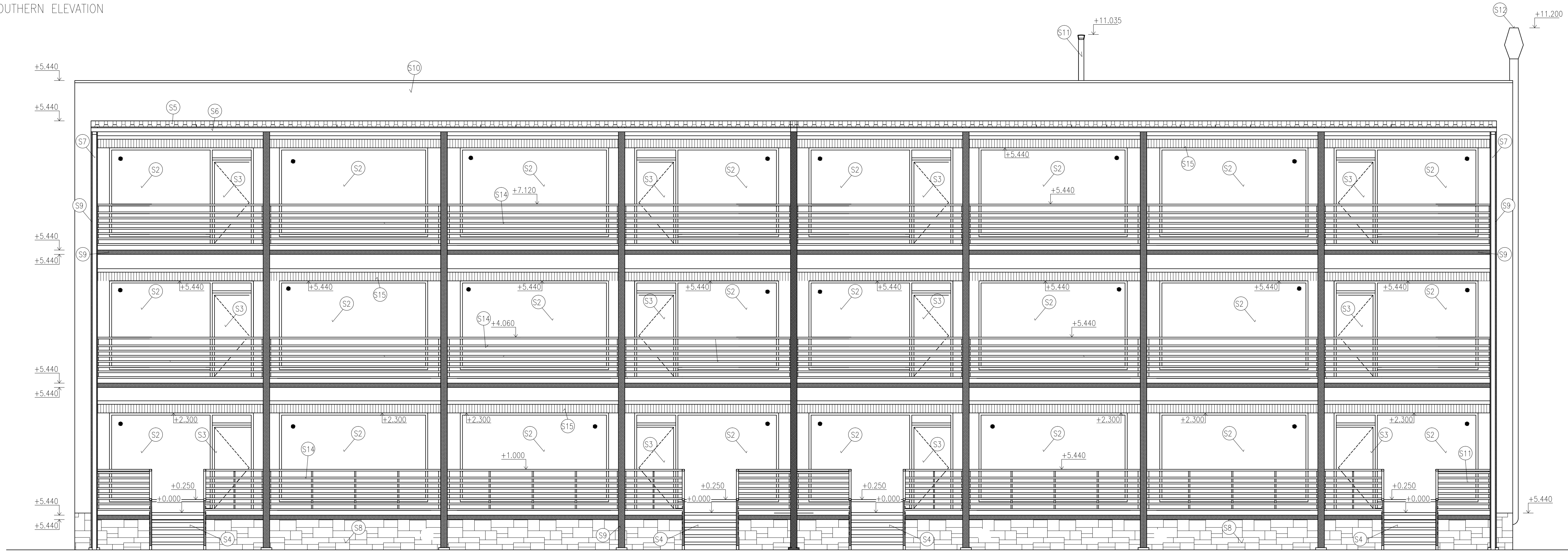
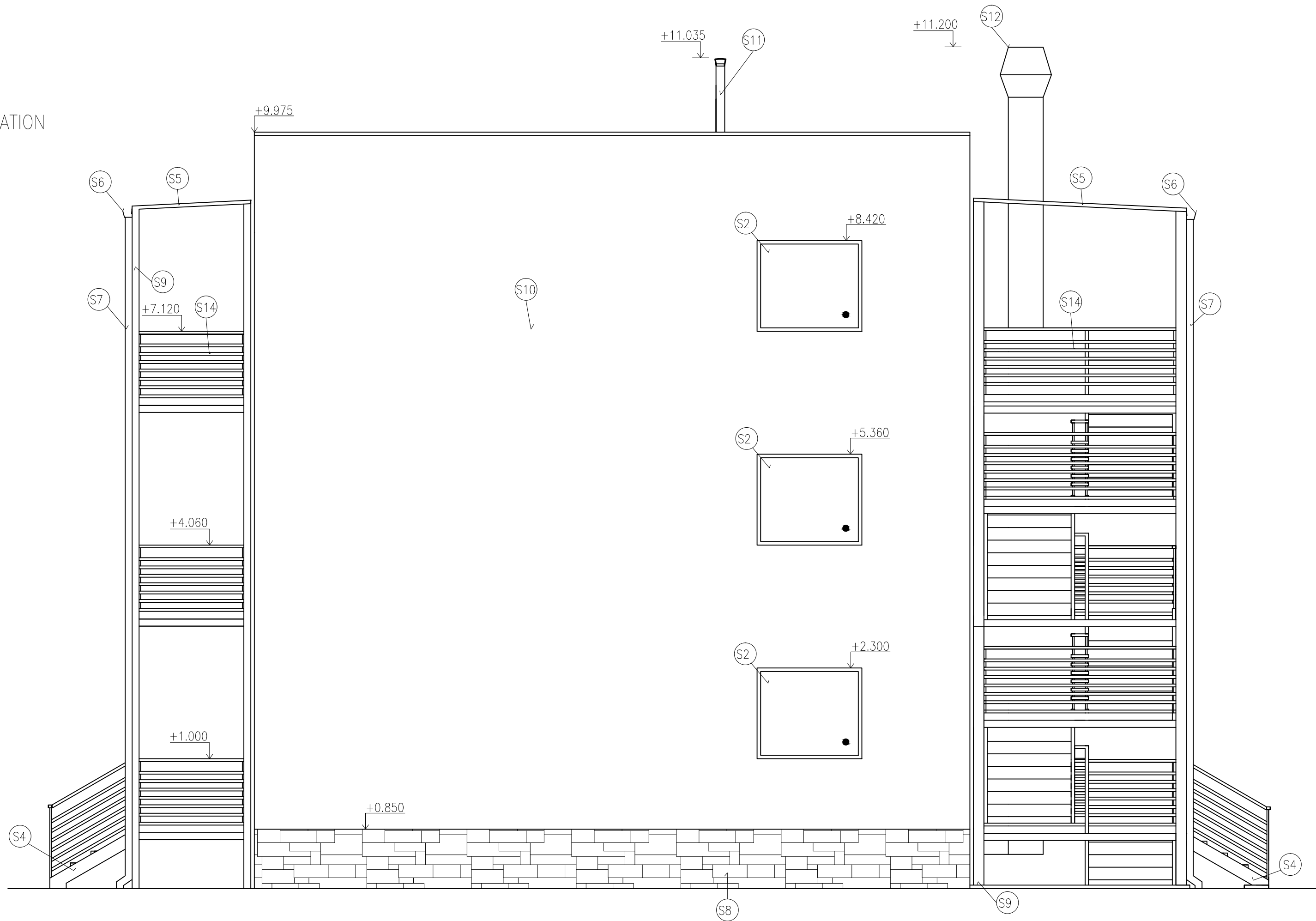


SOUTHERN ELEVATION



EASTERN ELEVATION



LEGEND OF SURFACE MATERIAL

- (S1) WOODEN DOORS, SLAVONA PROGRESSION – TREND
- (S2) WOODEN WINDOWS, SLAVONA PROGRESSION
- (S3) BALCONY WOODEN DOORS, SLAVONA PROGRESSION
- (S4) STEEL STAIRCASE, GALVANIZED COATING
- (S5) STEEL TRAPEZOIDAL SHEET TR 37/200, GALVANIZED STEEL
- (S6) SQUARED STEEL GUTTER, LINDAB RER DRAINAGE SYSTEM, WIDTH 136mm
- (S7) STEEL RAIN PIPE, LINDLAB DRAINAGE SYSTEM, DIAMETER 100mm
- (S8) TILING OF THE TOOTING, FIBER-CEMENT BOARDS, DARK GREY
- (S9) STEEL CONSTRUCTION, GALVANIZED COATING
- (S10) SILICATE PLASTER, CEMIX, WHITE (KREATIV II 2011)
- (S11) CHIMNEY FLULE, EKO TURBO, DN 130mm
- (S12) EXHOUSED HEAD AND VENTILATION DUCT, GALVANIZED COATING
- (S13) ROOF SERVICE OPENING, 1000x1000mm
- (S14) STEEL-WOODEN RAILING, GALVANIZED COATIN/WOOD
- (S15) EMERGENCY ROOF OUTLET
- (S16) SUB BLINDS, CLIMAX Z-90, GREY

0.000 = 324,95 m n.m. / COORDINATE SYSTEM S-JTSK

DESIGNED BY	SUPERVISOR	 VUT BRNO FACULTY OF CIVIL ENGINEERING VEVERÍ 33195 602 00 Brno	
Bc. DANIEL NIESNER	Doc. Ing. Jiří Sedláč		
MASTER'S THESIS ENERGY PASSIVE BLOCK OF APARTMENTS		FORMAT	A1
		DATE	01/2014
D.1.1-15. – SOUTHERN AND EASTERN ELEVATION		ST. SKUPINA	CA2NPS1
		MÉRITKO	1:50